

MENU

COCKTAILS

SHORT DRINKS

<i>Poncha Tradicional</i>	€7,20
<i>Caipirinha</i>	€7,20
<i>Dry Martini</i>	€7,20
<i>Daiquiri</i>	€7,20
<i>Marguerita</i>	€7,20

LONG DRINKS

<i>Tequila Sunrise</i>	€7,70
<i>Cuba Libre</i>	€7,70
<i>Mojito</i>	€7,70
<i>Pina Colada</i>	€7,70

NON ALCOHOLIC COCKTAILS

<i>San Francisco (Orange, pineapple, peach, lemon juices and grenadine)</i>	€6,70
<i>Pestaninha (Soft drink, grenadine, lemon juice)</i>	€6,70

ÁGUAS, REFRIGERANTES, CERVEJAS

<i>Sparkling/Still water 0,50cl</i>	€2,30
<i>Sparkling/Still water 0,75cl</i>	€4,10
<i>Still Water 1,5L</i>	€3,90
<i>Soft drinks</i>	€3,30
<i>Passion fruit</i>	€3,50

DRAUGHT BEER

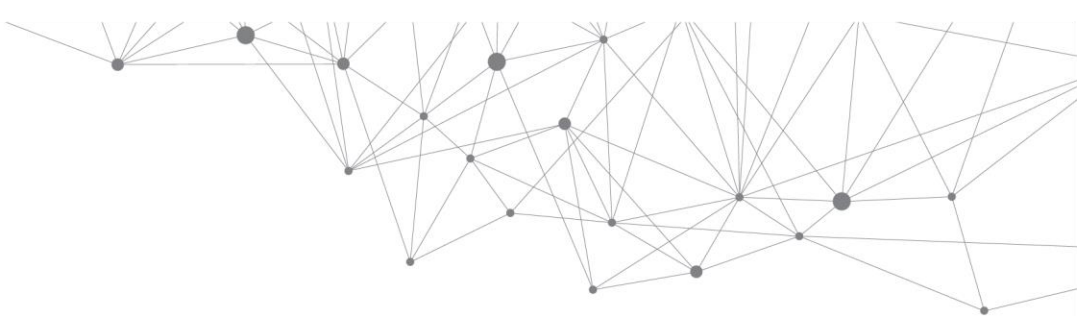
<i>Coral draught beer 0,30cl</i>	€3,80
----------------------------------	-------

BOTTLE BEER

<i>Coral bottle 0,30cl</i>	€3,80
<i>Coral dark beer 0,30cl</i>	€3,80
<i>Coral non-alcoholic 0,25cl</i>	€3,60
<i>Somersby</i>	€3,80

SANGRIA

<i>Jug</i>	€14,90
<i>By glass</i>	€5,70



MENU

COFFEE

Espresso

€2,60

Decaffeinated

€2,60

Coffee with milk

€3,60

Capuccino

€3,60

Tea

€3,60

Hot chocolat

€3,60